

Airport On-Time Departure Performance (Aug 2018, by VariFlight)

URC Tops the Most Punctual Major Airport in Mainland China

In August, New Chitose (CTS) keeps its first position among the TOP10 global hubs. In mainland China, airports have a strong showing in on-time performance handling 402,000 flight departures with a YoY growth of 8.5 percent. Powered by VariFlight incomparable aviation database, the monthly report of *Airport On-time Departure Performance* provides an overview of how global airports are performing in August, 2018.

- New Chitose (CTS) has topped the global hubs for consecutive five months with the on-time departure performance of 91.18 percent.
- Urumqi Diwopu (URC) dominates the punctual rankings among large airports in mainland China, ascending in the rank of TOP5 APAC large hubs.
- Airports with a capacity of over 10 million passengers in mainland China show robust YoY growth, among which Shanghai Pudong (PVG) witnesses the most phenomenal increase of 28.09 percent, followed by Chengdu Shuangliu (CTU) and Shanghai Hongqiao (SHA).
- Shenzhen Bao'an (SZX) suffers the most from severe weather in August, being affected by 21 hours.

Global Hubs

CTS Tops the OTP Chart for Consecutive Five Months

New Chitose (CTS) has topped the global hubs for consecutive five months with an on-time departure rate of 91.18 percent and an average departure delay of 11.20 minutes, showing a 0.18 percent YoY increase. Compared with July, August has seen a drop at Sheremetyevo from the third place to the second place, while Honolulu (HNL) from second to fifth.

Ranking	IATA Code	Airports	Country/Region	Flight Departures	On-time Departure Performance	Average Departure Delay (minutes)
1	CTS	New Chitose	JP	7489	91.18%	11.20
2	SVO	Sheremetyevo	RU	15833	90.77%	17.92
3	ITM	Itami	JP	6301	89.54%	15.95
4	LED	Pulkovo	RU	7727	87.81%	19.11
5	HNL	Honolulu	US	6860	87.58%	21.23
6	HEL	Helsinki-Vantaa	FI	7787	84.62%	17.97
7	BNE	Brisbane	AU	7993	84.22%	20.32
8	VKO	Vnukovo	RU	8351	84.16%	20.29

9	OSL	Oslo	NO	10621	83.94%	18.83
10	BLR	Bengaluru	IN	9759	83.46%	18.77

Source: VariFlight

Figure 1: World's TOP10 best airports for on-time departures (Large airports, Aug, 2018)

Global Medium-Sized Airports

CHC Becomes the Most Punctual Medium-Sized Airport

Among the TOP10 global medium-sized airports, Christchurch (CHC) ranks first with a departure punctuality of 92.93 percent, growing for seven places from July. Kahului (OGG) falls to the seventh place from the top.

Ranking	IATA Code	Airports	Country/Region	Flight Departures	On-time Departure Performance	Average Departure Delay (minutes)
1	CHC	Christchurch	NZ	3058	92.93%	12.15
2	SSA	Salvador	BR	2377	92.87%	11.75
3	WLG	Wellington	NZ	3593	92.16%	12.98
4	CMN	Mohammed V International	MA	4086	92.07%	9.50
5	FOR	Pinto Martins – Fortaleza	BR	2152	91.91%	12.45
6	TRD	Trondheim	NO	2123	91.71%	12.03
7	OGG	Kahului	US	3220	91.02%	14.43
8	MSQ	Minsk	BY	2279	90.90%	15.06
9	REC	Recife	BR	3022	90.75%	15.26
10	CNX	Chiang Mai	TH	3187	90.53%	13.86

Source: VariFlight

Figure 2: World's TOP10 best airports for on-time departures (Medium-sized airports, Aug, 2018)

APAC---Major Airports

URC Ascends in the Rank of TOP5 APAC Large Hubs

Among the TOP20 major airports in APAC, New Chitose (CTS) is delivered the first with an on-time departure rate of 91.18 percent. In mainland China, five airports join the list, among which 乌鲁木齐地窝铺 (URC) ranks fifth (81.37 percent), becoming the most punctual major airport in mainland China, followed by Xi'an Xianyang (XIY), Dalian Zhoushuizi (DLC), Chengdu Shuangliu (CTU) and Chongqing Jiangbei (CKG).

Ranking	IATA Code	Airports	Country/Region	Flight Departures	On-time Departure Performance	Average Departure Delay (minutes)
---------	-----------	----------	----------------	-------------------	-------------------------------	-----------------------------------

1	CTS	New Chitose	JP	7489	91.18%	11.20
2	ITM	Itami	JP	6301	89.54%	15.95
3	BNE	Brisbane	AU	7993	84.22%	20.32
4	AKL	Auckland	NZ	6857	81.92%	20.97
5	URC	Urumqi Diwopu	CN	8373	81.37%	24.57
6	GMP	Gimpo	KR	6164	80.90%	26.75
7	FUK	Fukuoka	JP	8138	80.80%	22.60
8	HND	Haneda	JP	21328	79.94%	23.58
9	DMK	Don Mueang	TH	11275	77.69%	22.77
10	BKK	Suvarnabhumi	TH	15111	76.00%	25.07
11	XIY	Xi'an Xianyang	CN	14514	75.41%	29.54
12	MEL	Melbourne	AU	9946	75.33%	24.71
13	HAN	Noi Bai	VN	6519	72.28%	28.40
14	SYD	Sydney Kingsford Smith	AU	13292	71.84%	27.75
15	KIX	Osaka	JP	7751	71.19%	33.18
16	CJU	Jeju	KR	7255	70.77%	28.50
17	DLC	Dalian Zhoushuizi	CN	6728	70.18%	39.64
18	CTU	Chengdu Shuangliu	CN	14571	69.84%	38.39
19	CKG	Chongqing Jiangbei	CN	12473	68.94%	36.27
20	SIN	Singapore Changi	SG	15850	67.20%	29.63

Source: VariFlight

Figure 3: TOP20 best airports in Asia-Pacific for on-time departures (Major airports, Aug, 2018)

APAC---Medium-Sized Airports

LJG Tops the Medium-Sized Airports in Mainland China

Christchurch (CHC) ranks first of the TOP20 list with an on-time departure rate of 92.93 percent, followed by Wellington (WLG) and Chiang Mai (CNX). In mainland China, Lijiang Sanyi (LJG) is recognized as the most punctual medium-sized airport for consecutive six months with an on-time performance of 76.42 percent, dropping three places to eighteenth compared with July, and has been the only medium-sized airport in mainland China in the list.

Ranking	IATA Code	Airports	Country/Region	Flight Departures	On-time Departure Performance	Average Departure Delay (minutes)
1	CHC	Christchurch	NZ	3058	92.93%	12.15
2	WLG	Wellington	NZ	3593	92.16%	12.98
3	CNX	Chiang Mai	TH	3187	90.53%	13.86
4	KHH	Kaohsiung	TW, CN	2531	88.72%	16.42
5	MZG	Magong	TW, CN	2037	88.14%	15.81

6	PNH	Pochentong	KH	2072	88.00%	16.15
7	SDJ	Sendai	JP	2201	85.76%	17.48
8	TSA	Taipei Songshan	TW, CN	2528	85.73%	18.52
9	KOJ	Kagoshima	JP	3327	84.60%	19.70
10	ADL	Adelaide	AU	3305	84.54%	19.21
11	NGO	Nagoya	JP	4689	83.39%	23.18
12	CNS	Cairns	AU	2087	82.43%	20.39
13	PER	Perth	AU	4147	81.43%	22.98
14	HKT	Phuket	TH	4854	81.03%	19.58
15	PUS	Busan	KR	4803	78.45%	24.67
16	PEN	Penang	MY	2716	78.44%	20.31
17	HLP	Halim Perdanakusuma	ID	2452	76.80%	20.73
18	LJG	Lijiang Sanyi	CN	2694	76.42%	27.73
19	BKI	Sabah	MY	3199	75.76%	24.24
20	KNO	Kualanamu	ID	3331	69.40%	28.96

Source: VariFlight

Figure 4: TOP20 best airports in Asia-Pacific for on-time departures (Medium-sized airports, Aug, 2018)

Mainland China---Airports with a Capacity over 10 Million Passengers URC Tops the OTP Chart and PVG Shows the Most Rapid Growth

Urumqi Diwopu (URC) ranks first among the airports with a capacity of over 10 million passengers in mainland China with its on-time departure performance of 81.37 percent in August, witnessing an obvious increase of eleven places compared with July, followed by Xi'an Xianyang (XIY) and Dalian Zhoushuizi (DLC). Airports with a capacity of over 10 million passengers in mainland China show robust YoY growth in this category, among which Shanghai Pudong (PVG) shows the most rapid growth of 28.09 percent, followed by Chengdu Shuangliu (CTU) and Shanghai Hongqiao (SHA) with respectively 25.10 percent and 24.47 percent.

Ranking	IATA Code	Airports	Flight Departures	On-time Departure Performance	YoY	Average Departure Delay (minutes)
1	URC	Urumqi Diwopu	8373	81.37%	1.97%	24.57
2	XIY	Xi'an Xianyang	14514	75.41%	17.24%	29.54
3	DLC	Dalian Zhoushuizi	6728	70.18%	20.22%	39.64
4	CTU	Chengdu Shuangliu	14571	69.84%	25.10%	38.39
5	CKG	Chongqing Jiangbei	12473	68.94%	15.64%	36.27
6	TNA	Jinan Yaoqiang	5728	68.02%	12.67%	36.74
7	SHA	Shanghai Hongqiao	10965	67.16%	24.47%	40.16
8	WUH	Wuhan Tianhe	8099	66.80%	14.97%	36.53
9	NNG	Nanning Wuxu	5031	66.07%	14.91%	36.16

10	CSX	Changsha Huanghua	8391	64.70%	10.03%	40.37
11	HAK	Haikou Meilan	6665	64.52%	7.69%	40.73
12	KWE	Guiyang Longdongbao	6970	64.42%	12.36%	38.76
13	KHN	Nanchang Changbei	4402	63.99%	13.38%	40.84
14	HET	Hohhot Baita	5158	63.87%	18.97%	42.29
15	CGO	Zhengzhou Xinzheng	8900	63.84%	8.36%	46.20
16	FOC	Fuzhou Changle	4714	63.57%	21.98%	38.58
17	SYX	Sanya Phoenix	4878	62.68%	8.85%	44.03
18	KMG	Kunming Changshui	15887	62.19%	13.45%	41.08
19	TYN	Taiyuan Wusu	4572	62.09%	12.06%	45.71
20	TSN	Tianjin Binhai	7452	61.25%	8.80%	49.07
21	CAN	Guangzhou Baiyun	19593	59.93%	10.87%	45.17
22	PEK	Beijing Capital	25167	59.74%	18.91%	45.69
23	PVG	Shanghai Pudong	19186	58.92%	28.09%	47.01
24	LHW	Lanzhou Zhongchuan	4963	57.81%	4.12%	51.73
25	HGH	Hangzhou Xiaoshan	11225	55.91%	22.27%	52.42
26	HRB	Harbin Taiping	6352	55.68%	6.76%	54.52
27	TAO	Qingdao Liuting	8122	55.46%	12.10%	45.05
28	XMN	Xiamen Gaoqi	8159	55.03%	19.74%	47.52
29	SHE	Shenyang Taoxian	5834	54.84%	10.15%	51.63
30	NKG	Nanjing Lukou	9231	54.30%	20.42%	56.68
31	SZX	Shenzhen Bao'an	13693	54.15%	10.10%	59.72
32	CGQ	Changchun Longjia	3859	51.58%	7.21%	59.05

Source: VariFlight

Figure 5: China's airports on-time departure performance (airports with a capacity of over 10 million passengers, Aug, 2018)

Mainland China---Airports with a Capacity of 2 Million to 10 Million Passengers JHG Retains Outstanding Performance and NAY Improves 23.57% YoY

Regarding airports with a capacity of 2 million to 10 million passengers, Kashgar (KHG) surpasses Xishuangbanna (JHG) with an on-time performance of 89.44 percent, topping the OTP chart. Compared with the same period last year, all airports present an increase with Yichang Sanxia (YIH) dipping slightly; Beijing Nanyuan (NAY) enjoys the most rapid YoY growth of 23.57 percent, followed by Lhasa Kongga (LXA) and Nantong Xingdong (NTG) with respectively 21.42 percent and 21.13 percent.

Ranking	IATA Code	Airports	Flight Departures	On-time Departure Performance	YoY	Average Departure Delay (minutes)
1	KHG	Kashgar	767	89.44%	10.59%	12.25
2	JHG	Xishuangbanna	1692	76.89%	3.77%	29.06

3	LJG	Lijiang Sanyi	2694	76.42%	15.98%	27.73
4	HLD	Hulun Buir Dongshan	1565	74.13%	13.20%	33.35
5	LXA	Lhasa Kongga	1743	73.38%	21.42%	30.16
6	KWL	Guilin Liangjiang	3258	69.30%	14.19%	34.94
7	XNN	Xining Caojiapu	3284	68.21%	5.53%	42.11
8	DSN	Ordos	994	67.38%	12.97%	37.74
9	ZHA	ZhanJiang	966	67.29%	7.89%	38.18
10	INC	Yinchuan Hedong	3555	66.31%	6.79%	43.34
11	NAY	Beijing Nanyuan	1975	65.16%	23.57%	34.47
12	WEH	WeiHai	859	64.03%	13.97%	37.23
13	SWA	Jieyang Chaoshan	2351	60.09%	9.25%	39.25
14	YIH	Yichang Sanxia	1126	59.70%	-4.56%	42.84
15	SJW	Shijiazhuang Zhengding	3677	58.78%	17.87%	46.66
16	ZUH	Zhuhai Jinwan	3659	57.58%	19.38%	54.82
17	BAV	Baotou Erliban	751	57.39%	7.20%	49.64
18	HFE	Hefei Xinqiao	3859	54.50%	11.75%	51.88
19	YNT	Yantai Penglai	3434	53.41%	9.54%	49.81
20	JJN	QUANZHOU JINJIANG	2434	52.08%	13.88%	48.56
21	NGB	Ningbo Lishe	3534	50.76%	13.39%	53.70
22	WNZ	Wenzhou Longwan	3618	50.45%	12.85%	48.52
23	MIG	Mianyang Nanjiao	1533	46.38%	15.28%	51.44
24	WUX	Sunan Shuofang	2407	42.57%	17.74%	61.83
25	NTG	Nantong Xingdong	990	41.90%	21.13%	57.40
26	CZX	Changzhou Benniu	1170	32.30%	2.19%	70.75

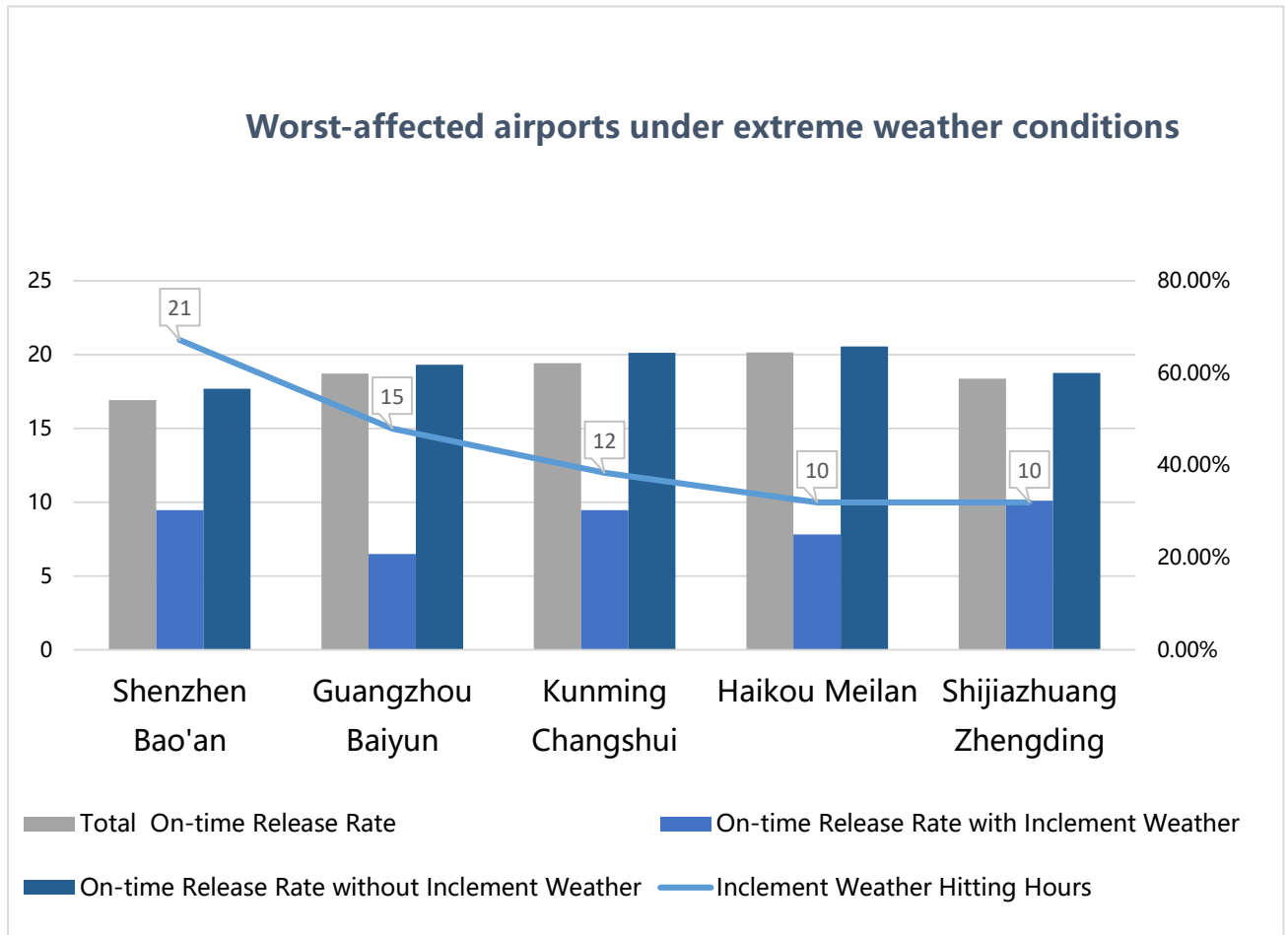
Source: VariFlight

Figure 6: China's airports on-time departure performance (airports with a capacity of 2 million to 10 million passengers, Aug, 2018)

Worst-Affected Airports under Severe Weather

SZX Suffers the Most from Severe Weather

In August, Shenzhen Bao'an (SZX) suffers the most from severe weather, being affected by 21 hours, followed by Guangzhou Baiyun (CAN) and Kunming Changshui (KMG) with respectively 15 and 12 hours.



Source: VariFlight

Figure 7: China's worst-affected airports for normal flight release rate (Aug, 2018)

Notes for editors

Period: Aug 1- Aug 31, 2018

Flights: Commercial air passenger flights only. Cargo aircrafts, corporate jets and general aviation are excluded.

Actual departure flights: Departure flights that have actual take-off time and actual departure time in VariFlight database. Canceled flights are excluded.

Actual arrival flights: Arrival flights that have actual take-off time and actual departure time in VariFlight database. Canceled flights are excluded.

Large airports: Airports with above 6000 actual departure flights monthly.

Medium-sized airports: Airports with 2000 to 6000 actual departure flights monthly.

On-time departure flights: ATD-STD<30mins

On-time arrival flights: ATA-STA<30mins

On-time departure rate: On-time Departure Flights/Actual Departure Flights * 100%

On-time arrival rate: On-time Arrival Flights/Actual Arrival Flights * 100%

Average departure delay time: Total Departure Delay Time/ Actual Departure Flights

(Departure delay time of a single flight: ATD-STD. If a flight departs ahead of the scheduled time of departure, then the result is zero.)

Average arrival delay time: Total Arrival Delay Time/ Actual Arrival Flights

(Arrival delay time of a single flight: ATA-STA. If a flight arrives ahead of the scheduled time of arrival, then the result is zero.)

Airports in Mainland China: Airports in mainland China can be divided into three classes with a capacity of over 10 million passengers, 2 million to 10 million passengers and less than 2 million passengers respectively, in accordance with the passenger throughput published by Civil Aviation Administration of China (CAAC), 2017.