

Airport On-Time Departure Performance (Sep 2018, by VariFlight)

TNA Tops the Most Punctual Major Airport in Mainland China

Powered by VariFlight incomparable aviation database, the monthly report of *Airport On-time Departure Performance* provides an overview of how global airports perform in September, 2018.

In September, although being affected by typhoon extremely, New Chitose (CTS) still holds onto the first spot among the TOP10 global hubs. In mainland China, airports handle 378,000 flight departures with a YoY growth of 4.6 percent.

- New Chitose (CTS) has topped the global hubs for consecutive six months.
- Jinan Yaoqiang (TNA) dominates the punctual rankings among large airports in mainland China, leading an on-time rate of 82.75 percent, with a YoY growth of 9.04 percent.
- Hangzhou Xiaoshan (HGH) suffers the most from severe weather in September, being affected by 15 hours.

Global Hubs

CTS Tops the OTP Chart for Consecutive Six Months

In early September, New Chitose (CTS) was forced to close due to the earthquake. Still, it continues to be the best among global hubs for consecutive six months, with an on-time departure rate of 95.83 percent and an average departure delay of 5.92 minutes, showing a 0.16 percent YoY increase. Departures handled by New Chitose (CTS) decreased by 1,152 flights MoM and 1,770 flights YoY. In the list, Sheremetyevo (SVO) and Honolulu (HNL) are respectively in the second and third place.

Ranking	IATA Code	Airports	Country/Region	Flight Departures	On-time Departure Performance	Average Departure Delay (minutes)
1	CTS	New Chitose	JP	6337	95.83%	5.92
2	SVO	Sheremetyevo	RU	15598	91.25%	17.00
3	HNL	Honolulu	US	6173	89.84%	19.03
4	HEL	Helsinki-Vantaa	FI	7787	89.04%	15.53
5	PDX	Portland	US	7732	87.86%	17.05
6	LED	Pulkovo	RU	7284	86.30%	19.45
7	SLC	Salt Lake City	US	10087	86.29%	20.66
8	HND	Haneda	JP	19920	86.22%	21.07
9	OSL	Oslo	NO	10622	85.87%	18.55

10	STL	Saint Louis	US	7101	85.80%	19.83
----	-----	-------------	----	------	--------	-------

Source: VariFlight

Figure 1: World's TOP10 best airports for on-time departures (Large airports, Sep, 2018)

Global Medium-Sized Airports

CMN Becomes the Most Punctual Medium-Sized Airport

Among the TOP10 global medium-sized airports, Mohammed V (CMN) ranks first with a departure punctuality of 94.73 percent and an average delay of 6.28 minutes. Chiang Mai (CNX) performs well with an on-time rate of 93.99 percent, up from the eighth last month to the second place.

Ranking	IATA Code	Airports	Country/Region	Flight Departures	On-time Departure Performance	Average Departure Delay (minutes)
1	CMN	Mohammed V	MA	3625	94.73%	6.28
2	CNX	Chiang Mai	TH	3038	93.99%	10.13
3	KHH	Kaohsiung	TW, CN	2300	93.73%	11.33
4	SDJ	Sendai	JP	2067	93.36%	12.94
5	ITM	Itami	JP	5566	93.11%	13.91
6	TFN	Tenerife	ES	3007	92.97%	12.16
7	OGG	Kahului	US	2990	92.56%	10.31
8	CHC	Christchurch	NZ	2932	92.14%	13.11
9	TRD	Trondheim	NO	2195	91.81%	11.52
10	FOR	Pinto Martins – Fortaleza	BR	2078	91.70%	12.39

Source: VariFlight

Figure 2: World's TOP10 best airports for on-time departures (Medium-sized airports, Sep, 2018)

APAC---Major Airports

Three Japanese Airports Top the List and CKG Ranks First among Chinese Large Hubs

In the APAC TOP20 major airports list, the first three are all Japanese airports, among which New Chitose (CTS) is the winner. In mainland China, eleven airports join the list, among which Chongqing Jiangbei (CKG) is the most punctual major airport with an on-time performance of 81.92 percent.

Ranking	IATA Code	Airports	Country/Region	Flight Departures	On-time Departure Performance	Average Departure Delay (minutes)
1	CTS	New Chitose	JP	6337	95.83%	5.92
2	HND	Haneda	JP	19920	86.22%	21.07
3	FUK	Fukuoka	JP	7707	84.98%	20.17

4	BNE	Brisbane	AU	7747	84.66%	19.76
5	GMP	Gimpo	KR	6095	84.20%	24.01
6	AKL	Auckland	NZ	6618	83.72%	20.03
7	BKK	Suvarnabhumi	TH	14330	83.11%	21.69
8	DMK	Don Mueang	TH	10448	82.16%	20.64
9	CKG	Chongqing Jiangbei	CN	12160	81.92%	21.86
10	DLC	Dalian Zhoushuizi	CN	6412	81.68%	19.98
11	URC	Urumqi Diwopu	CN	7921	81.14%	24.07
12	XIY	Xi'an Xianyang	CN	13823	80.95%	24.78
13	HAK	Haikou Meilan	CN	6101	80.94%	21.51
14	WUH	Wuhan Tianhe	CN	7532	79.75%	21.96
15	SHA	Shanghai Hongqiao	CN	10965	79.43%	24.65
16	TSN	Tianjin Binhai	CN	7083	78.28%	25.18
17	CGO	Zhengzhou Xinzheng	CN	8434	78.26%	24.20
18	CSX	Changsha Huanghua	CN	7746	78.07%	23.02
19	MEL	Melbourne	AU	9854	77.64%	23.99
20	CTU	Chengdu Shuangliu	CN	13935	76.74%	28.92

Source: VariFlight

Figure 3: TOP20 best airports in Asia-Pacific for on-time departures (Major airports, Sep, 2018)

APAC---Medium-Sized Airports

CNX Tops the Medium-Sized Airports in APAC

Chiang Mai (CNX) ranks first of the TOP20 list with an on-time departure rate of 93.99 percent, followed by Kaohsiung (KHH) and Sendai (SDJ). In mainland China, Lijiang Sanyi (LJG) and Xining Caojiapu (XNN) join the list that the former ranks fifteenth with an on-time performance of 83.54 percent, cementing its position at the forefront of medium-sized airports for seven consecutive years

Ranking	IATA Code	Airports	Country/Region	Flight Departures	On-time Departure Performance	Average Departure Delay (minutes)
1	CNX	Chiang Mai	TH	3038	93.99%	10.13
2	KHH	Kaohsiung	TW, CN	2300	93.73%	11.33
3	SDJ	Sendai	JP	2067	93.36%	12.94
4	ITM	Itami	JP	5566	93.11%	13.91
5	CHC	Christchurch	NZ	2932	92.14%	13.11
6	PNH	Pochentong	KH	2024	90.80%	15.81
7	WLG	Wellington	NZ	3443	90.24%	14.23
8	KOJ	Kagoshima	JP	3057	90.23%	15.64

9	NGO	Nagoya	JP	4246	88.58%	18.34
10	HKT	Phuket	TH	4208	88.25%	14.73
11	TSA	Taipei Songshan	TW, CN	2322	88.08%	17.60
12	ADL	Adelaide	AU	3224	87.89%	16.42
13	PUS	Busan	KR	4570	85.52%	18.92
14	PER	Perth	AU	4018	85.18%	21.20
15	LJG	Lijiang Sanyi	CN	2443	83.54%	19.06
16	KIX	Osaka	JP	4242	83.19%	22.43
17	TNA	Jinan Yaoqiang	CN	5144	82.75%	18.19
18	BKI	Sabah	MY	3117	81.83%	19.78
19	HAN	Noi Bai	VN	5847	80.90%	27.97
20	XNN	Xining Caojiapu	CN	2793	80.50%	21.49

Source: VariFlight

Figure 4: TOP20 best airports in Asia-Pacific for on-time departures (Medium-sized airports, Sep, 2018)

Mainland China---Airports with a Capacity over 10 Million Passengers TNA Tops the OTP Chart and NNG Shows the Most Rapid Growth

Among the airports with a capacity of over 10 million passengers in mainland China, Jinan Yaoqiang (TNA) ranks first with its on-time departure performance of 82.75 percent (increasing 9.04 percent YoY) followed by Chongqing Jiangbei (CKG) and Dalian Zhoushuizi (DLC), while Urumqi Diwopu (URC) drops from the first to the fourth. Airports with a capacity of over 10 million passengers in mainland China show robust YoY growth in this category, among which Nanning Wuxu (NNG) shows the most rapid growth of 28.31 percent, followed by Xiamen Gaoqi (XMN) and Sanya Phoenix (SYX) with respectively 22.36 percent and 19.46 percent.

Ranking	IATA Code	Airports	Flight Departures	On-time Departure Performance	YoY	Average Departure Delay (minutes)
1	TNA	Jinan Yaoqiang	5144	82.75%	9.04%	18.19
2	CKG	Chongqing Jiangbei	12160	81.92%	9.58%	21.86
3	DLC	Dalian Zhoushuizi	6412	81.68%	3.98%	19.98
4	URC	Urumqi Diwopu	7921	81.14%	-6.29%	24.07
5	XIY	Xi'an Xianyang	13823	80.95%	12.97%	24.78
6	HAK	Haikou Meilan	6101	80.94%	17.27%	21.51
7	WUH	Wuhan Tianhe	7532	79.75%	14.16%	21.96
8	SHA	Shanghai Hongqiao	10965	79.43%	17.41%	24.65
9	SYX	Sanya Phoenix	4492	78.93%	19.46%	25.16
10	TSN	Tianjin Binhai	7083	78.28%	10.02%	25.18
11	CGO	Zhengzhou Xinzheng	8434	78.26%	9.22%	24.20
12	CSX	Changsha Huanghua	7746	78.07%	10.28%	23.02

13	KHN	Nanchang Changbei	3987	78.01%	18.51%	24.19
14	HET	Hohhot Baita	4717	77.32%	1.36%	25.12
15	CTU	Chengdu Shuangliu	13935	76.74%	13.10%	28.92
16	NNG	Nanning Wuxu	4722	76.56%	28.31%	26.27
17	CAN	Guangzhou Baiyun	18578	76.33%	16.43%	27.38
18	KMG	Kunming Changshui	14981	76.20%	9.60%	27.59
19	FOC	Fuzhou Changle	4167	75.17%	17.84%	26.98
20	SZX	Shenzhen Bao'an	13092	74.85%	14.95%	29.75
21	TAO	Qingdao Liuting	7621	74.52%	6.98%	25.24
22	KWE	Guiyang Longdongbao	6554	73.99%	10.24%	28.10
23	LHW	Lanzhou Zhongchuan	4732	73.95%	5.77%	26.24
24	TYN	Taiyuan Wusu	4349	73.55%	6.77%	31.80
25	PEK	Beijing Capital	23641	71.08%	10.86%	29.61
26	PVG	Shanghai Pudong	18736	70.63%	14.75%	32.16
27	XMN	Xiamen Gaoqi	7714	69.95%	22.36%	29.88
28	HRB	Harbin Taiping	5978	69.17%	3.23%	31.30
29	HGH	Hangzhou Xiaoshan	10865	65.81%	11.30%	37.72
30	NKG	Nanjing Lukou	8541	64.83%	8.68%	37.57
31	SHE	Shenyang Taoxian	5456	63.88%	2.45%	36.75
32	CGQ	Changchun Longjia	3668	63.38%	-1.99%	35.77

Source: VariFlight

Figure 5: China's airports on-time departure performance (airports with a capacity of over 10 million passengers, Sep, 2018)

Mainland China---Airports with a Capacity of 2 Million to 10 Million Passengers HLD Top the List and ZUH Improves 27.56% YoY

Regarding airports with a capacity of 2 million to 10 million passengers, Hulun Buir Dongshan (HLD) ranks first with an on-time performance of 90.79 percent. Compared with the same period last year, Zhuhai Jinwan (ZUH) enjoys the most rapid YoY growth of 27.56 percent, followed by Shijiazhuang Zhengding (SJW) and Nantong Xingdong (NTG) with respectively 17.55 percent and 16.79 percent.

Ranking	IATA Code	Airports	Flight Departures	On-time Departure Performance	YoY	Average Departure Delay (minutes)
1	HLD	Hulun Buir Dongshan	843	90.79%	88.60%	2.19%
2	JHG	Xishuangbanna	1528	85.21%	83.15%	2.06%
3	KHG	Kashgar	771	83.79%	87.58%	-3.79%
4	LJG	Lijiang Sanyi	2443	83.54%	73.90%	9.64%
5	XNN	Xining Caojiapu	2793	80.50%	82.05%	-1.54%
6	KWL	Guilin Liangjiang	2935	79.39%	68.64%	10.75%

7	DSN	Ordos	922	78.60%	80.34%	-1.75%
8	INC	Yinchuan Hedong	3321	78.04%	76.73%	1.30%
9	ZHA	ZhanJiang	901	78.02%	67.78%	10.24%
10	LXA	Lhasa Kongga	1616	75.82%	61.48%	14.35%
11	ZUH	Zhuhai Jinwan	3338	75.76%	48.20%	27.56%
12	BAV	Baotou	705	75.22%	76.09%	-0.87%
13	WEH	WeiHai	833	74.73%	62.98%	11.75%
14	SJW	Shijiazhuang Zhengding	3380	71.00%	53.44%	17.55%
15	SWA	Jieyang Chaoshan	2095	70.55%	58.66%	11.88%
16	JJN	QUANZHOU JINJIANG	2263	68.64%	52.67%	15.97%
17	NGB	Ningbo Lishe	3386	68.07%	58.77%	9.30%
18	HFE	Hefei Xinqiao	3522	67.48%	57.54%	9.94%
19	YNT	Yantai Penglai	3127	67.15%	62.32%	4.83%
20	YIH	Yichang Sanxia	1159	66.09%	72.20%	-6.11%
21	WNZ	Wenzhou Longwan	3445	65.27%	52.25%	13.02%
22	NAY	Beijing Nanyuan	1874	64.16%	67.78%	-3.62%
23	NTG	Nantong Xingdong	922	60.74%	43.95%	16.79%
24	WUX	Sunan Shuofang	2284	56.19%	47.72%	8.47%
25	MIG	Mianyang Nanjiao	1445	54.36%	42.81%	11.55%
26	CZX	Changzhou Benniu	1127	43.06%	44.46%	-1.40%

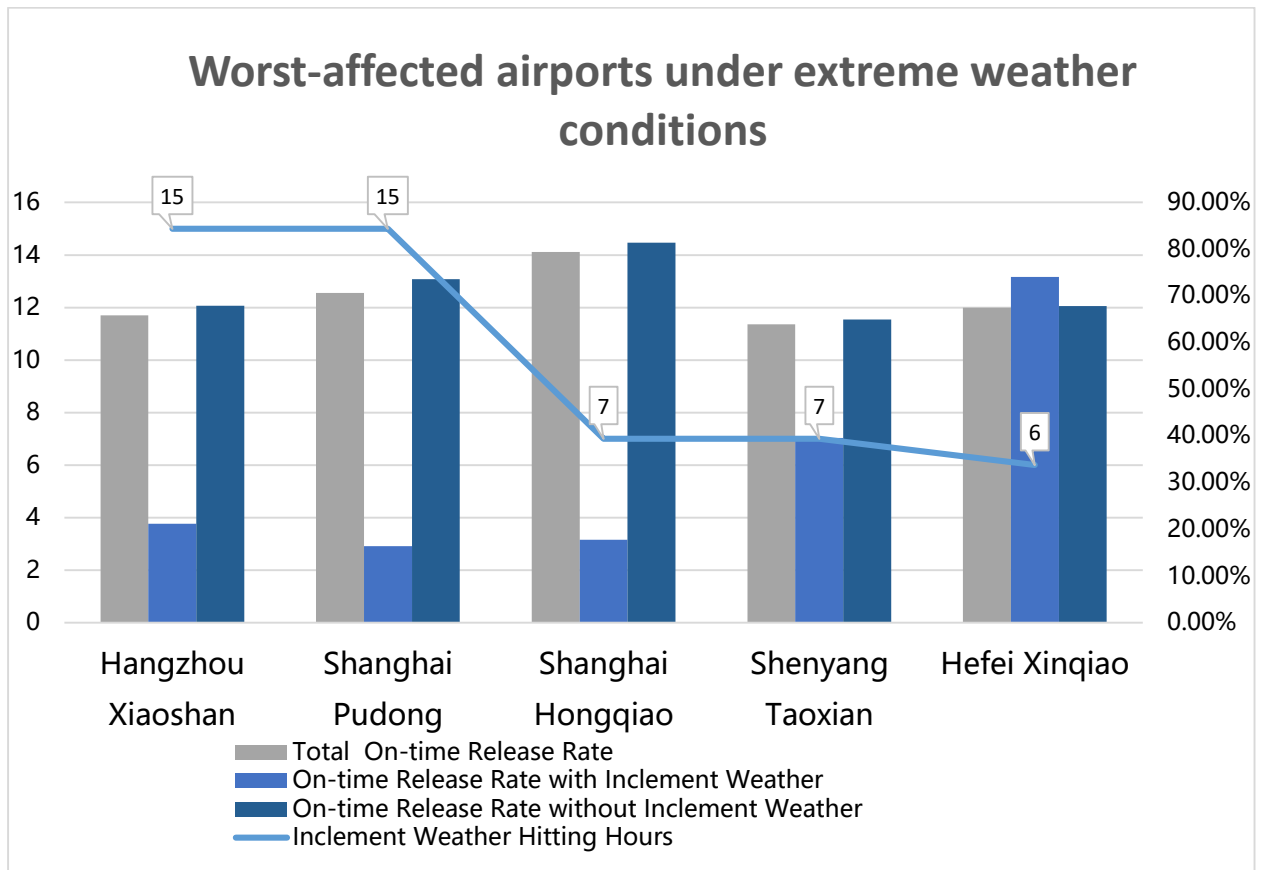
Source: VariFlight

Figure 6: China's airports on-time departure performance (airports with a capacity of 2 million to 10 million passengers, Sep, 2018)

Worst-Affected Airports under Severe Weather

HGH Suffers the Most from Severe Weather

In September, Hangzhou Xiaoshan (HGH) suffers the most from inclement weather, being affected by 15 hours, while Shanghai Pudong (PVG) and Shanghai Hongqiao (SHA) were disrupted for 15 and 7 hours respectively.



Source: VariFlight

Figure 7: China's worst-affected airports for normal flight release rate (Sep, 2018)

Notes for editors

Period: Sep 1- Sep 30, 2018

Flights: Commercial air passenger flights only. Cargo aircrafts, corporate jets and general aviation are excluded.

Actual departure flights: Departure flights that have actual take-off time and actual departure time in VariFlight database. Canceled flights are excluded.

Actual arrival flights: Arrival flights that have actual take-off time and actual departure time in VariFlight database. Canceled flights are excluded.

Large airports: Airports with above 6000 actual departure flights monthly.

Medium-sized airports: Airports with 2000 to 6000 actual departure flights monthly.

On-time departure flights: ATD-STD<30mins

On-time arrival flights: ATA-STA<30mins

On-time departure rate: On-time Departure Flights/Actual Departure Flights * 100%

On-time arrival rate: On-time Arrival Flights/Actual Arrival Flights * 100%

Average departure delay time: Total Departure Delay Time/ Actual Departure Flights (Departure delay time of a single flight: ATD-STD. If a flight departs ahead of the scheduled time of departure, then the result is zero.)

Average arrival delay time: Total Arrival Delay Time/ Actual Arrival Flights
(Arrival delay time of a single flight: ATA-STA. If a flight arrives ahead of the scheduled time of arrival, then the result is zero.)

Airports in Mainland China: Airports in mainland China can be divided into three classes with a capacity of over 10 million passengers, 2 million to 10 million passengers and less than 2 million passengers respectively, in accordance with the passenger throughput published by Civil Aviation Administration of China (CAAC), 2017.