

Airport On-Time Departure Performance (Oct 2018, by VariFlight)

URC chalks up second in global OTP chart

Powered by VariFlight incomparable aviation database, the monthly report of *Airport On-time Departure Performance* provides an overview of how global airports perform in October, 2018.

In October, New Chitose (CTS) still holds onto the first spot among the TOP10 global hubs. In mainland China, airports handle 397,000 flight departures with a 6.4 percent YoY growth, among which Urumqi Diwopu (URC) chalks up second in global OTP chart.

- Three Chinese airports join global TOP10 OTP list, where Urumqi Diwopu (URC) takes second place for the first time.
- Xining Caojiapu (XNN) performs best for average delay among TOP20 medium airports in APAC.
- Xiamen Gaoqi (XMN) shows the most obvious YoY growth of 19.07 percent among large airports in mainland China, followed by Nanning Wuxu (NNG) (16.75 percent) and Wuhan Tianhe (WUH) (14.74 percent).
- Chongqing Jiangbei (CKG) suffers the most from severe weather in October, being affected by 22 hours.

Global Hubs

URC Chalks up Second Place in Global OTP Chart

In October, New Chitose (CTS) retains best among global hubs for consecutive seven months, with an on-time departure rate of 96.53 percent and an average departure delay of 5.21 minutes. Chinese airports hit the best ever ranking of this year: Urumqi Diwopu (URC), Xi'an Xianyang (XIY) and Wuhan Tianhe (WUH) join global TOP10 OTP list, in which URC takes the second place with OTP of 93.86 percent, followed by Sheremetyevo (SVO).

Ranking	IATA Code	Airports	Country/Region	Flight Departures	On-time Departure Performance	Average Departure Delay (minutes)
1	CTS	New Chitose	JP	6970	96.53%	5.21
2	URC	Urumqi Diwopu	CN	7758	93.86%	11.20
3	SVO	Sheremetyevo	RU	15834	91.72%	16.78

4	HEL	Helsinki-Vantaa	FI	7787	90.30%	15.02
5	HNL	Honolulu	US	6353	89.84%	17.10
6	LED	Pulkovo	RU	6650	89.31%	17.71
7	XIY	Xi'an Xianyang	CN	14307	89.27%	15.43
8	WUH	Wuhan Tianhe	CN	7866	88.94%	13.18
9	HND	Haneda	JP	21212	88.67%	19.36
10	KIX	Osaka	JP	7596	88.03%	17.10

Source: VariFlight

Figure 1: World's TOP10 best airports for on-time departures (Large airports, Oct, 2018)

Global Medium-Sized Airports

CMN Becomes the Most Punctual Medium-Sized Airport

Among the TOP10 global medium-sized airports, Itami (ITM) climbs four places to the first with a departure punctuality of 96.63 percent and an average delay of 11.74. Sendai (SDJ) and Kaohsiung (KHH) comes in the second and third place.

Ranking	IATA Code	Airports	Country/Region	Flight Departures	On-time Departure Performance	Average Departure Delay (minutes)
1	ITM	Itami	JP	5930	96.63%	11.74
2	SDJ	Sendai	JP	2239	94.66%	11.45
3	KHH	Kaohsiung	TW, CN	2470	93.94%	12.19
4	KOJ	Kagoshima	JP	3228	93.62%	13.87
5	NGO	Nagoya	JP	4313	92.42%	14.97
6	OGG	Kahului	US	3071	92.27%	12.15
7	SSA	Dois de Julho	BR	2381	91.58%	12.64
8	PNH	Pochentong	KH	2136	91.28%	11.86
9	TRD	Trondheim	NO	2322	91.18%	11.94
10	RIX	Riga	LV	3440	90.99%	14.09

Source: VariFlight

Figure 2: World's TOP10 best airports for on-time departures (Medium-sized airports, Oct, 2018)

APAC---Major Airports

Thirteen Chinese Airports Rank in TOP20 List

New Chitose (CTS) has firmly fixed to the top spot in the APAC TOP20 major airports rankings. In mainland China, thirteen airports make the list, showing robust growth this month. Compared with September, the places held by Haneda (HND), Fukuoka (FUK) and Brisbane (BNE) are respectively replaced by Urumqi Diwopu (URC), Xi'an Xianyang (XIY) and Wuhan Tianhe (WUH).

Ranking	IATA Code	Airports	Country/Region	Flight Departures	On-time Departure Performance	Average Departure Delay (minutes)
1	CTS	New Chitose	JP	6970	96.53%	5.21
2	URC	Urumqi Diwopu	CN	7758	93.86%	11.20
3	XIY	Xi'an Xianyang	CN	14307	89.27%	15.43
4	WUH	Wuhan Tianhe	CN	7866	88.94%	13.18
5	HND	Haneda	JP	21212	88.67%	19.36
6	KIX	Osaka	JP	7596	88.03%	17.10
7	SHA	Shanghai Hongqiao	CN	11562	87.58%	17.42
8	FUK	Fukuoka	JP	8159	86.80%	18.21
9	CGO	Zhengzhou Xinzheng	CN	8561	86.56%	15.26
10	CKG	Chongqing Jiangbei	CN	13056	85.89%	18.46
11	HAK	Haikou Meilan	CN	6648	85.64%	16.38
12	CTU	Chengdu Shuangliu	CN	14647	84.53%	20.37
13	CSX	Changsha Huanghua	CN	7925	83.91%	17.08
14	GMP	Gimpo	KR	6220	83.78%	23.80
15	CAN	Guangzhou Baiyun	CN	20000	83.40%	20.43
16	SZX	Shenzhen Bao'an	CN	14382	83.29%	22.72
17	DLC	Dalian Zhoushuizi	CN	6287	82.76%	19.10
18	AKL	Auckland	NZ	7153	82.53%	20.59
19	KMG	Kunming Changshui	CN	15501	80.49%	23.09
20	BNE	Brisbane	AU	8157	80.38%	21.68

Source: VariFlight

Figure 3: TOP20 best airports in Asia-Pacific for on-time departures (Major airports, Oct, 2018)

APAC---Medium-Sized Airports

XNN Shows Best for Average Delay in APAC

In October, Itami (ITM) ranks first of the TOP20 list with an on-time departure rate of 96.63 percent; Xining Caojiapu (XNN) performs best for average delay of 9.92 minutes. In mainland China, XNN tops the five Chinese medium-sized airports in the APAC list with OTP of 90.66 percent, rising to the seventh place from the twentieth and cutting the average departure delay by 11.57 minutes.

Ranking	IATA Code	Airports	Country/Region	Flight Departures	On-time Departure Performance	Average Departure Delay (minutes)
1	ITM	Itami	JP	5930	96.63%	11.74
2	SDJ	Sendai	JP	2239	94.66%	11.45
3	KHH	Kaohsiung	TW, CN	2470	93.94%	12.19

4	KOJ	Kagoshima	JP	3228	93.62%	13.87
5	NGO	Nagoya	JP	4313	92.42%	14.97
6	PNH	Pochentong	KH	2136	91.28%	11.86
7	XNN	Xining Caojiapu	CN	2657	90.66%	9.92
8	CHC	Christchurch	NZ	3139	90.17%	14.72
9	CNX	Chiang Mai	TH	3183	89.75%	13.48
10	LJG	Lijiang Sanyi	CN	2535	89.41%	12.39
11	WLG	Wellington	NZ	3614	88.18%	15.82
12	HKT	Phuket	TH	4630	88.12%	14.84
13	TNA	Jinan Yaoqiang	CN	5258	87.96%	13.67
14	ZUH	Zhuhai Jinwan	CN	3601	87.45%	14.83
15	TSA	Taipei Songshan	TW, CN	2234	87.29%	17.15
16	PUS	Busan	KR	4755	86.81%	19.47
17	PER	Perth	AU	4289	86.58%	19.30
18	INC	Yinchuan Hedong	CN	3422	86.47%	15.01
19	BKI	Sabah	MY	3178	85.93%	16.33
20	ADL	Adelaide	AU	3431	85.38%	18.30

Source: VariFlight

Figure 4: TOP20 best airports in Asia-Pacific for on-time departures (Medium-sized airports, Oct, 2018)

Mainland China---Airports with a Capacity over 10 Million Passengers URC Tops the OTP Chart and XMN Shows the Most Rapid Growth

Among the airports with a capacity of over 10 million passengers in mainland China, Urumqi Diwopu (URC) ranks first with its on-time departure performance of 93.86 percent (increasing 4.49 percent YoY) followed by Xi'an Xianyang (XIY) and Wuhan Tianhe (WUH). Airports with a capacity of over 10 million passengers in mainland China show robust YoY growth in this category, among which Xiamen Gaoqi (XMN) shows the most rapid growth of 19.07 percent, followed by Nanning Wuxu (NNG) and Wuhan Tianhe (WUH) with respectively 16.75 percent and 14.74 percent.

Ranking	IATA Code	Airports	Flight Departures	On-time Departure Performance	YoY	Average Departure Delay (minutes)
1	URC	Urumqi Diwopu	7758	93.86%	4.49%	11.20
2	XIY	Xi'an Xianyang	14307	89.27%	11.01%	15.43
3	WUH	Wuhan Tianhe	7866	88.94%	14.74%	13.18
4	TNA	Jinan Yaoqiang	5258	87.96%	3.37%	13.67
5	SHA	Shanghai Hongqiao	11562	87.58%	9.48%	17.42
6	CGO	Zhengzhou Xinzheng	8561	86.56%	9.61%	15.26
7	CKG	Chongqing Jiangbei	13056	85.89%	2.10%	18.46
8	HAK	Haikou Meilan	6648	85.64%	6.13%	16.38

9	LHW	Lanzhou Zhongchuan	4865	85.28%	3.57%	14.95
10	HET	Hohhot Baita	4676	84.54%	-1.32%	18.62
11	CTU	Chengdu Shuangliu	14647	84.53%	2.91%	20.37
12	KHN	Nanchang Changbei	4287	84.17%	13.09%	18.94
13	CSX	Changsha Huanghua	7925	83.91%	5.01%	17.08
14	CAN	Guangzhou Baiyun	20000	83.40%	9.42%	20.43
15	SZX	Shenzhen Bao'an	14382	83.29%	4.08%	22.72
16	DLC	Dalian Zhoushuizi	6287	82.76%	-1.12%	19.10
17	FOC	Fuzhou Changle	4368	82.61%	10.54%	20.76
18	TYN	Taiyuan Wusu	4560	82.33%	1.92%	20.79
19	KMG	Kunming Changshui	15501	80.49%	0.89%	23.09
20	NNG	Nanning Wuxu	4940	80.48%	16.75%	21.02
21	SYX	Sanya Phoenix	4932	79.82%	2.39%	23.64
22	PVG	Shanghai Pudong	19798	79.44%	6.22%	23.92
23	TSN	Tianjin Binhai	7208	78.86%	0.90%	23.01
24	XMN	Xiamen Gaoqi	8074	78.45%	19.07%	23.23
25	TAO	Qingdao Liuting	7885	78.36%	0.72%	21.40
26	HGH	Hangzhou Xiaoshan	11246	78.23%	5.92%	24.99
27	KWE	Guiyang Longdongbao	6904	76.72%	2.19%	23.99
28	HRB	Harbin Taiping	6190	75.97%	1.60%	24.85
29	PEK	Beijing Capital	25677	75.52%	6.93%	23.90
30	NKG	Nanjing Lukou	9126	74.99%	1.12%	28.47
31	CGQ	Changchun Longjia	3919	71.51%	-2.81%	26.53
32	SHE	Shenyang Taoxian	5839	70.47%	-2.20%	28.34

Source: VariFlight

Figure 5: China's airports on-time departure performance (airports with a capacity of over 10 million passengers, Oct, 2018)

Mainland China---Airports with a Capacity of 2 Million to 10 Million Passengers

KHG Top the List and ZUH Improves 22.30% YoY

Regarding airports with a capacity of 2 million to 10 million passengers, Kashgar (KHG) ranks first with an on-time performance of 94.88 percent. Compared with the same period last year, Zhuhai Jinwan (ZUH) enjoys the most rapid YoY growth of 22.30 percent, followed by Quanzhou Jinjiang (JJJ) and Shijiazhuang Zhengding (SJW) with respectively 17.69 percent and 13.61 percent.

Ranking	IATA Code	Airports	Flight Departures	On-time Departure Performance	YoY	Average Departure Delay (minutes)
1	KHG	Kashgar	821	94.88%	2.16%	6.83
2	HLD	Hulun Buir Dongshan	735	92.05%	-1.33%	10.75

3	XNN	Xining Caojiapu	2657	90.66%	4.30%	9.92
4	DSN	Ordos	929	90.04%	3.17%	14.31
5	LJG	Lijiang Sanyi	2535	89.41%	5.95%	12.39
6	JHG	Xishuangbanna	1515	87.69%	-2.52%	13.85
7	ZUH	Zhuhai Jinwan	3601	87.45%	22.30%	14.83
8	INC	Yinchuan Hedong	3422	86.47%	4.01%	15.01
9	BAV	Baotou	761	85.70%	0.27%	17.95
10	ZHA	ZhanJiang	1042	84.55%	4.50%	15.17
11	KWL	Guilin Liangjiang	3024	83.32%	4.74%	17.21
12	WEH	WeiHai	876	81.74%	5.57%	18.06
13	SWA	Jieyang Chaoshan	2275	81.72%	7.82%	18.30
14	LXA	Lhasa Kongga	1697	79.68%	11.42%	20.91
15	JJN	QUANZHOU JINJIANG	2326	79.26%	17.69%	19.58
16	NAY	Beijing Nanyuan	1880	78.30%	4.07%	19.21
17	WNZ	Wenzhou Longwan	3660	77.99%	11.01%	21.05
18	NGB	Ningbo Lishe	3540	77.37%	5.88%	22.25
19	YIH	Yichang Sanxia	1175	76.58%	-2.87%	22.24
20	SJW	Shijiazhuang Zhengding	3567	75.57%	13.61%	25.28
21	HFE	Hefei Xinqiao	3674	75.43%	4.08%	25.18
22	YNT	Yantai Penglai	3225	71.91%	0.93%	24.69
23	NTG	Nantong Xingdong	1053	70.37%	8.90%	25.08
24	WUX	Sunan Shuofang	2391	67.15%	-4.69%	28.12
25	MIG	Mianyang Nanjiao	1466	62.89%	9.02%	30.09
26	CZX	Changzhou Benniu	1196	52.73%	-9.02%	37.66

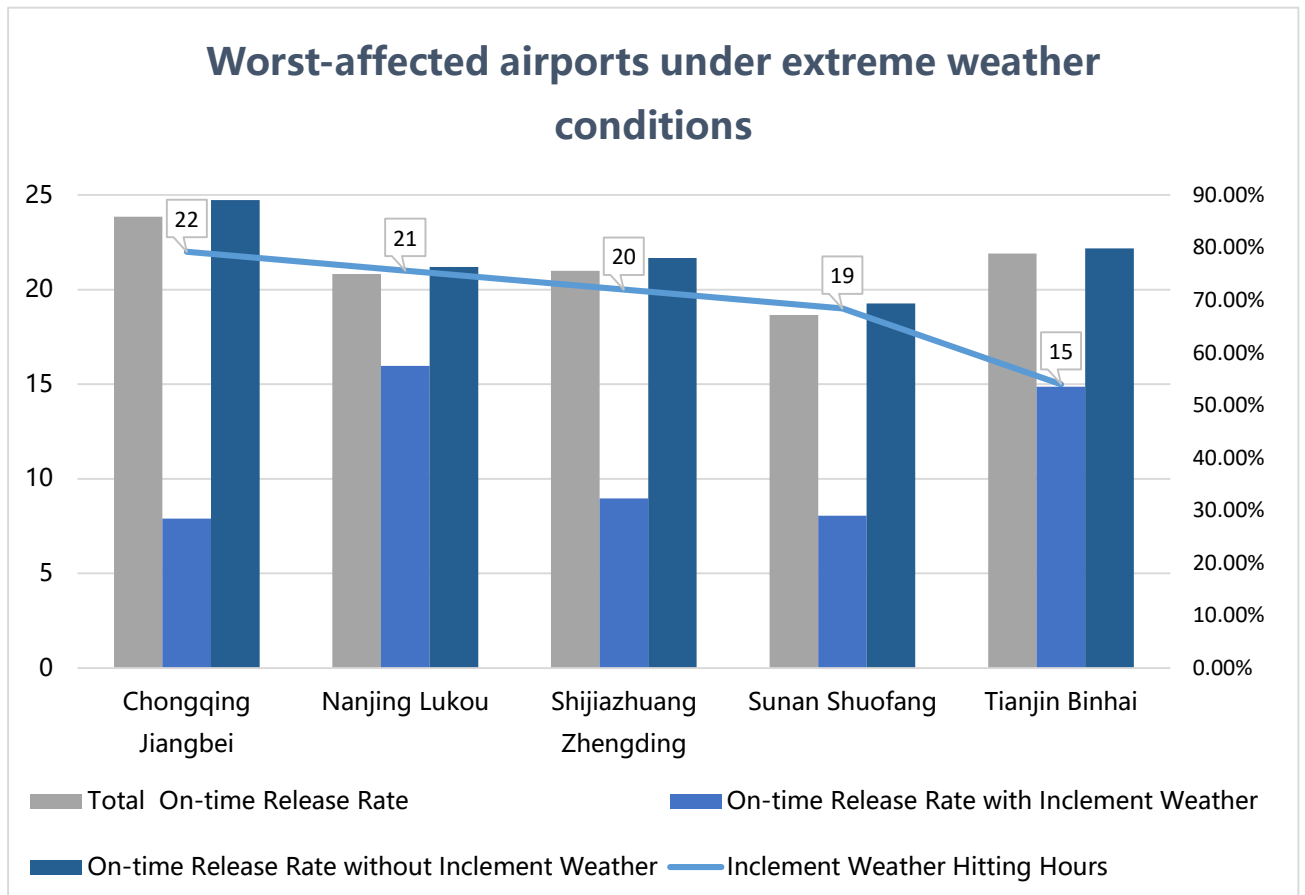
Source: VariFlight

Figure 6: China's airports on-time departure performance (airports with a capacity of 2 million to 10 million passengers, Oct, 2018)

Worst-Affected Airports under Severe Weather

HGH Suffers the Most from Severe Weather

In October, Chongqing Jiangbei (CKG) suffers the most from inclement weather, being affected by 22 hours, while Nanjing Lukou (NKG) and Shijiazhuang Zhengding (SJW) were disrupted for 21 and 20 hours respectively.



Source: VariFlight

Figure 7: China's worst-affected airports for normal flight release rate (Oct, 2018)

Notes for editors

Period: Oct 1- Oct 31, 2018

Flights: Commercial air passenger flights only. Cargo aircrafts, corporate jets and general aviation are excluded.

Actual departure flights: Departure flights that have actual take-off time and actual departure time in VariFlight database. Canceled flights are excluded.

Actual arrival flights: Arrival flights that have actual take-off time and actual departure time in VariFlight database. Canceled flights are excluded.

Large airports: Airports with above 6000 actual departure flights monthly.

Medium-sized airports: Airports with 2000 to 6000 actual departure flights monthly.

On-time departure flights: ATD-STD<30mins

On-time arrival flights: ATA-STA<30mins

On-time departure rate: On-time Departure Flights/Actual Departure Flights * 100%

On-time arrival rate: On-time Arrival Flights/Actual Arrival Flights * 100%

Average departure delay time: Total Departure Delay Time/ Actual Departure Flights (Departure delay time of a single flight: ATD-STD. If a flight departs ahead of the

scheduled time of departure, then the result is zero.)

Average arrival delay time: Total Arrival Delay Time/ Actual Arrival Flights

(Arrival delay time of a single flight: ATA-STA. If a flight arrives ahead of the scheduled time of arrival, then the result is zero.)

Airports in Mainland China: Airports in mainland China can be divided into three classes with a capacity of over 10 million passengers, 2 million to 10 million passengers and less than 2 million passengers respectively, in accordance with the passenger throughput published by Civil Aviation Administration of China (CAAC), 2017.