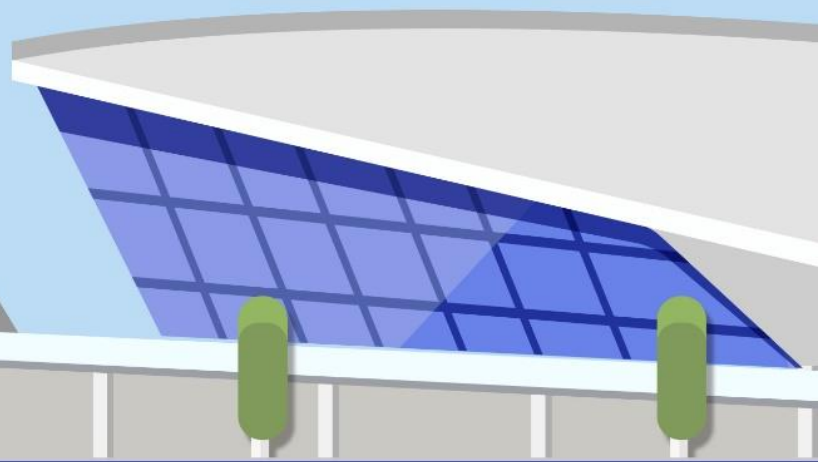


May 2019

Airports On-time Departure Performance Report



VariFlight®

Airport On-Time Departure Performance (May 2019, by VariFlight)

XIY Tops Airports with Capacity over 30 Million Passengers in Mainland China

Powered by VariFlight incomparable aviation database, the monthly report of *Airport On-time Departure Performance* provides an overview on how global airports perform in May, 2019.

New Chitose (CTS) tops again the OTP chart of global large airports with a stable performance. In mainland China, airports handle 402,700 flight departures with a YoY growth of 5.64 percent.

- Urumqi Diwopu (URC) ranks eighth in TOP10 OTP list of global hubs, being the most punctual large airport in Mainland China.
- Xi'an Xianyang (XIY), showing an OTP of 80.30 percent, has topped the airports with capacity over 30 million passengers in mainland China for consecutive three months, while Guangzhou Baiyun (CAN) witnesses the most obvious YoY growth.
- In mainland China, Hangzhou Xiaoshan (HGH) suffers the most from severe weather in May.

Global Large and Medium-Sized Airports

URC ranks eighth among global hubs

In May, New Chitose (CTS) leads again among global TOP10 hubs with an on-time departure rate of 92.76 percent and an average departure delay of 10.94 minutes. Urumqi Diwopu (URC) is the only Chinese airport listed in global TOP10 OTP chart, moving down from the fifth place last month to the eighth place.

Among the TOP10 global medium-sized airports, Stockholm-Bromma (BMA) ranks first with an on-time rate of 94.50 percent and an average departure delay of 9.70 minutes, followed by Itami (ITM) and Minsk (MSQ) in the second and third places.

World's TOP Airports for On-Time Departures (Large and Medium-Sized Airports, May, 2019)							
Category	IATA Code	Airports	Country/ Region	Flight Departures	On-time Departure Performance	Average Departure Delay (minutes)	Ranking
Large Airports	CTS	New Chitose	JP	6760	92.76%	10.94	1
	LED	Pulkovo	RU	6704	91.98%	15.46	2
	SUB	Banda Udara	ID	6338	89.59%	14.00	3
	GMP	Gimpo	KR	6163	89.46%	18.21	4
	JNB	OR Tambo International	ZA	8419	88.83%	17.64	5
	PDX	Portland	US	7724	88.60%	16.30	6
	KIX	Osaka	JP	8128	88.43%	16.67	7
	URC	Urumqi Diwopu	CN	7489	87.99%	16.01	8
	GRU	São Paulo-Guarulhos	BR	9946	87.92%	16.97	9
	HND	Haneda	JP	19361	87.81%	19.88	10
Medium- Sized Airports	BMA	Stockholm-Bromma	SE	2050	94.50%	9.70	1
	ITM	Itami	JP	5729	94.19%	14.14	2
	MSQ	Minsk	BY	2054	93.17%	11.96	3
	CPT	Cape Town	ZA	3477	93.07%	12.20	4
	KHH	Kaohsiung	TW	2589	93.02%	12.20	5
	RIX	Riga	LV	3671	92.96%	14.08	6
	OGG	Kahului	US	3232	92.90%	14.08	7
	ESB	Esenboga	TR	3769	92.45%	12.79	8
	BEY	Beirut	LB	2305	92.02%	12.89	9
	YEG	Edmonton	CA	3747	92.00%	11.56	10

Source: VariFlight

APAC Large and Medium-Sized Airports

Two Chinese Airports join the list

In May, New Chitose (CTS) still takes the top spot in the APAC TOP20 large airports rankings. Urumqi Diwopu (URC) and Dalian Zhoushuizi (DLC) become the two Chinese airports in the list.

Itami (ITM) dominates again the TOP10 medium-sized airports in APAC. No Chinese airports rank in the list.

TOP Airports for On-Time Departures in APAC (Large and Medium-Sized Airports, May, 2019)							
Category	IATA Code	Airports	Country/ Region	Flight Departures	On-time Departure Performance	Average Departure Delay (minutes)	Ranking
Large Airports	CTS	New Chitose	JP	6760	92.76%	10.94	1
	SUB	Banda Udara	ID	6338	89.59%	14.00	2
	GMP	Gimpo	KR	6163	89.46%	18.21	3
	KIX	Osaka	JP	8128	88.43%	16.67	4
	URC	Urumqi Diwopu	CN	7489	87.99%	16.01	5
	HND	Haneda	JP	19361	87.81%	19.88	6
	FUK	Fukuoka	JP	7602	87.65%	18.97	7
	CGK	Soekarno-Hatta	ID	16890	86.94%	18.03	8
	DLC	Dalian Zhoushuizi	CN	6486	86.78%	16.33	9
	BNE	Brisbane	AU	7998	86.52%	18.57	10
Medium- Sized Airports	ITM	Itami	JP	5729	94.19%	14.14	1
	KHH	Kaohsiung	TW	2589	93.02%	12.20	2
	NGO	Nagoya	JP	4680	91.53%	19.74	3
	CHC	Christchurch	NZ	2854	90.81%	16.67	4
	CNX	Chiang Mai	TH	3144	90.62%	11.01	5
	WLG	Wellington	NZ	3545	89.94%	14.86	6
	KOJ	Kagoshima	JP	2820	89.54%	15.72	7
	MZG	Magong	TW	2207	89.50%	15.48	8
	PNH	Pochentong	KH	2139	89.26%	12.90	9
	KNO	Kualanamu	ID	2736	88.77%	15.43	10

Source: VariFlight

Airports with a Capacity over 30 Million Passengers

XIY tops the list and CAN shows the best YoY growth

Regarding airports with a capacity over 30 million passengers, Xi'an Xianyang (XIY) tops the OTP list with an on-time performance of 80.30 percent, followed by Kunming Changshui (KMG) and Chongqing Jiangbei (CKG). Compared with the same period last year, Guangzhou Baiyun shows the best YoY growth of 10.79 percent, followed by Shanghai Pudong (PVG) and Chongqing Jiangbei (CKG) respectively with 8.74 percent and 7.73 percent.

TOP Airports for On-Time Departures in Mainland China (Capacity Over 30 Million Passengers, May, 2019)						
Ranking	IATA Code	Airports	Flight Departures	On-time Departure	YoY	Average Departure Delay (minutes)
1	XIY	Xi'an Xianyang	14421	80.30%	-1.69%	25.25
2	KMG	Kunming Changshui	14688	80.01%	-1.31%	25.59
3	CKG	Chongqing Jiangbei	12951	78.71%	7.73%	25.03
4	CTU	Chengdu Shuangliu	15029	77.52%	3.70%	29.49
5	PVG	Shanghai Pudong	19978	77.45%	8.74%	26.73
6	CAN	Guangzhou Baiyun	19523	75.91%	10.79%	28.74
7	SHA	Shanghai Hongqiao	11248	74.22%	0.58%	30.46
8	PEK	Beijing Capital	23510	67.46%	-0.35%	35.82
9	SZX	Shenzhen Bao'an	14280	66.76%	-3.36%	40.01
10	HGH	Hangzhou Xiaoshan	11209	63.12%	-4.52%	39.44

Source: VariFlight

Mainland China: Airports with a Capacity of 10 Million to 30 Million Passengers

URC tops the list and TAO shows the most rapid YoY growth

Among the airports with a capacity of 10 million to 30 million passengers in mainland China, Urumqi Diwopu (URC) ranks first with an on-time departure performance of 87.99 percent (increasing 8.47 percent YoY), followed by Dalian Zhoushuizi (DLC) and Jinan Yaoqiang (TNA). Compared with the same period last year, Qingdao Liuting (TAO) enjoys the most rapid YoY growth of 20.63 percent, followed by Hefei Xinqiao (HFE) and Shijiazhuang Zhengding (SJW) with respectively 17.92 percent and 16.56 percent.

TOP Airports for On-Time Departures in Mainland China (Capacity of 10 Million to 30 Million Passengers, May, 2019)						
Ranking	IATA Code	Airports	Flight Departures	On-time Departure	YoY	Average Departure Delay (minutes)
1	URC	Urumqi Diwopu	7489	87.99%	8.47%	16.01
2	DLC	Dalian Zhoushuizi	6486	86.78%	15.23%	16.33
3	TNA	Jinan Yaoqiang	5320	82.00%	6.53%	21.47
4	LHW	Lanzhou Zhongchuan	5110	79.58%	1.24%	22.53
5	HAK	Haikou Meilan	6187	79.39%	7.14%	25.40
6	KHN	Nanchang Changbei	3988	79.13%	5.87%	24.28
7	NNG	Nanning Wuxu	4685	78.37%	11.60%	23.96
8	CGO	Zhengzhou Xinzheng	8463	76.78%	10.81%	27.74
9	HRB	Harbin Taiping	5966	76.22%	3.78%	27.53
10	SYX	Sanya Phoenix	4478	76.08%	10.70%	28.39
11	TYN	Taiyuan Wusu	4281	75.80%	9.68%	26.30
12	HET	Hohhot Baita	4781	75.64%	1.19%	29.67
13	CSX	Changsha Huanghua	8161	74.97%	6.65%	27.78
14	SHE	Shenyang Taoxian	5954	74.40%	13.93%	29.10
15	SJW	Shijiazhuang Zhengding	3488	73.54%	16.56%	30.41
16	CGQ	Changchun Longjia	3920	73.54%	6.30%	28.06
17	KWE	Guiyang Longdongbao	6780	73.42%	4.60%	31.42
18	FOC	Fuzhou Changle	4299	73.20%	8.75%	28.01
19	TAO	Qingdao Liuting	7753	72.95%	20.63%	27.83
20	WUH	Wuhan Tianhe	8316	71.40%	-1.41%	30.04
21	HFE	Hefei Xinqiao	3689	70.56%	17.92%	33.91
22	ZUH	Zhuhai Jinwan	3711	69.53%	1.62%	40.74
23	WNZ	Wenzhou Longwan	3685	66.41%	11.52%	29.55
24	TSN	Tianjin Binhai	6736	65.60%	-1.16%	38.70
25	XMN	Xiamen Gaoqi	8007	63.51%	8.13%	36.82
26	NGB	Ningbo Lishe	3456	62.53%	-0.55%	36.58
27	NKG	Nanjing Lukou	9213	61.84%	-0.18%	42.69

Source: VariFlight

Mainland China: Airports with a Capacity of 2 Million to 10 Million Passengers

KHG tops the OTP chart and NTG shows the most rapid growth

Among airports with a capacity of 2 million to 10 million passengers, Kashgar (KHG) tops the global hubs with an on-time performance of 92.66 percent. Compared with the same period last year, Nantong Xingdong (NTG) enjoys the most rapid YoY growth of 31.55 percent, followed by Mianyang Nanjiao (MIG) and Yantai Penglai (YNT) with respectively 28.05 percent and 27.21 percent.

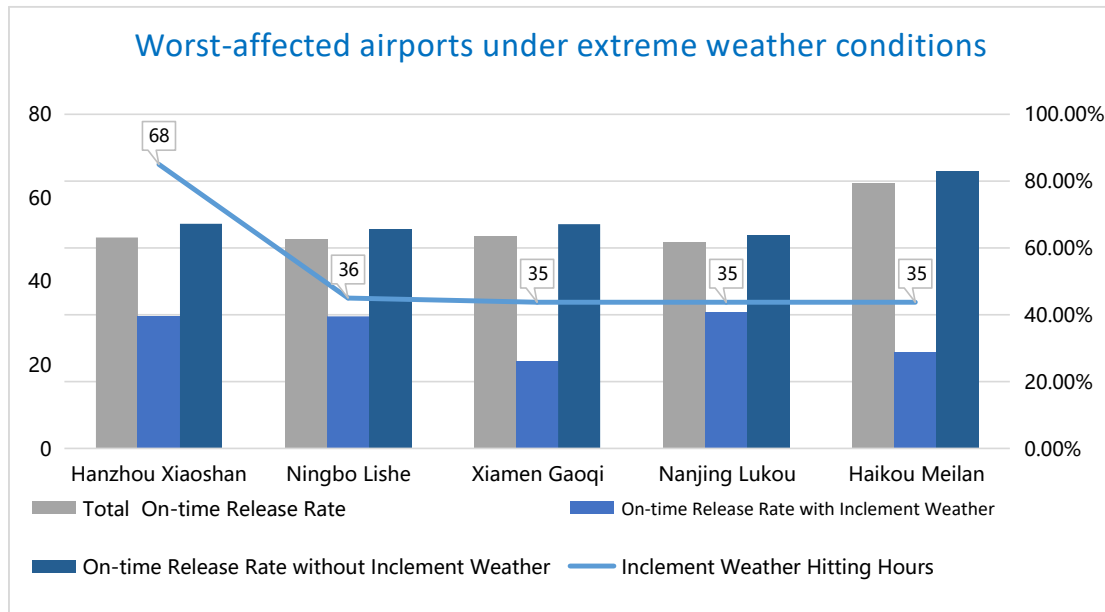
TOP Airports for On-Time Departures in Mainland China (Capacity of 2 Million to 10 Million Passengers, May, 2019)						
Ranking	IATA Code	Airports	Flight Departures	On-time Departure	YoY	Average Departure Delay (minutes)
1	KHG	Kashgar	913	92.66%	8.43%	9.72
2	UYN	Yulin Yuyang	1025	90.04%	-1.45%	13.24
3	JHG	Xishuangbanna	1743	87.74%	2.06%	15.96
4	DSN	Ordos	962	85.43%	11.62%	15.94
5	LIG	Lijiang Sanyi	2359	83.00%	0.26%	19.73
6	LXA	Lhasa Kongga	1763	82.78%	8.11%	17.21
7	HLD	Hulun Buir Dongshan	747	82.54%	-9.67%	19.58
8	INC	Yinchuan Hedong	3625	80.20%	1.47%	21.58
9	XNN	Xining Caojiapu	2810	80.13%	-2.98%	22.12
10	BAV	Baotou Donghe	706	78.05%	5.61%	24.18
11	KWL	Guilin Liangjiang	2886	78.03%	11.40%	23.66
12	ZHA	ZhanJiang	1121	76.65%	2.34%	26.39
13	DYG	Zhangjiajie Hehua	1305	76.63%	6.54%	27.51
14	YIH	Yichang Sanxia	1193	74.85%	-1.29%	25.65
15	WEH	WeiHai	1096	74.82%	19.14%	27.16
16	BHY	Beihai Fucheng	797	73.96%	2.82%	27.55
17	SWA	Jieyang Chaoshan	2289	73.78%	13.26%	26.64
18	YCU	Yuncheng Guangong	951	70.35%	-5.92%	32.98
19	NAY	Beijing Nanyuan	1835	68.65%	0.88%	28.68
20	ZYI	Zunyi Xinzhou	917	68.38%	10.90%	34.65
21	YNT	Yantai Penglai	3445	67.43%	27.21%	31.70
22	LYI	Linyi Shubuling	947	67.09%	5.49%	31.55
23	JJN	QUANZHOU JINJIANG	2617	65.49%	20.19%	33.81
24	XUZ	Xuzhou Guanyin	977	63.24%	12.01%	40.67
25	NTG	Nantong Xingdong	1153	56.03%	31.55%	41.12
26	YTY	Yangzhou Taizhou	935	55.46%	19.67%	47.54
27	MIG	Mianyang Nanjiao	1513	52.08%	28.05%	45.87
28	WUX	Sunan Shuofang	2509	45.59%	-11.22%	55.35
29	CZX	Changzhou Benniu	1260	37.54%	-4.95%	63.47

Source: VariFlight

Worst-Affected Airports under Severe Weather

HGH suffers the most from severe weather

In China, Hangzhou Xiaoshan (HGH) has been the airport suffering the most from inclement weather for consecutive three months, being affected by 68 hours in May.



Notes for editors

Period: May 1 - May 31, 2019

Flights: Commercial air passenger flights only. Cargo aircrafts, corporate jets and general aviation are excluded.

Actual departure flights: Departure flights that have actual take-off time and actual departure time in VariFlight database. Canceled flights are excluded.

Actual arrival flights: Arrival flights that have actual take-off time and actual departure time in VariFlight database. Canceled flights are excluded.

Large airports: Airports with above 6000 actual departure flights monthly.

Medium-sized airports: Airports with 2000 to 6000 actual departure flights monthly.

On-time departure flights: ATD-STD<30mins

On-time arrival flights: ATA-STA<30mins

On-time departure rate: On-time Departure Flights/Actual Departure Flights * 100%

On-time arrival rate: On-time Arrival Flights/Actual Arrival Flights * 100%

Average departure delay time: Total Departure Delay Time/ Actual Departure Flights (Departure delay time of a single flight: ATD-STD. If a flight departs ahead of the scheduled time of departure, then the result is zero.)

Average arrival delay time: Total Arrival Delay Time/ Actual Arrival Flights

(Arrival delay time of a single flight: ATA-STA. If a flight arrives ahead of the scheduled time of arrival, then the result is zero.)

Airports in Mainland China: Airports in mainland China can be divided into three classes with a capacity of over 30 million passengers, 10 million to 30 million passengers and 2 million to 10 million passengers respectively, in accordance with the passenger throughput published by Civil Aviation Administration of China (CAAC), 2018.